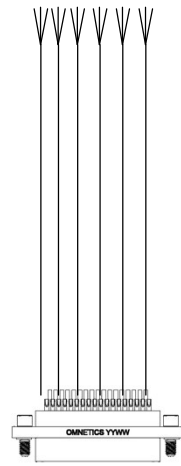




Application Diagram

SLICE6 AIR-BR – Sensor Connector Options



80000-04240-R
 37-p Cable Assy
 - 18 in leads
 - pigtail termination

13000-30120
 1ch, sensor connector assy



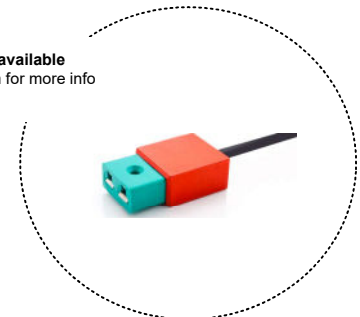
13006-90880
 37-p Cable Assy
 - 152mm/6 in leads
 - 6 x 7-pin circular connectors

13000-30121
 1ch sensor cable assy
 - 5m length
 - pigtail termination
 *available with ¼ bridge completion resistor
 (13000-30122, 90 in length)

SLICE6 AIR-B SENSOR INPUT
 - 37 pin Nano D connector
 - 6 available inputs for BRIDGE/PR/VOLTAGE



Thermocouple connection available
 Contact sales@dtsweb.com for more info





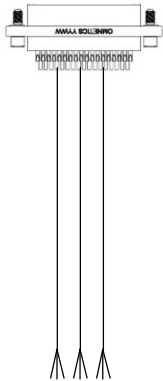
Application Diagram SLICE6 AIR-BR – System Connector Options



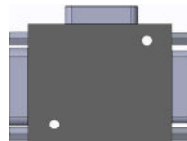
SLICE6 AIR-BR SYSTEM INPUT

- 21-p connector
- 9-36V
- 2 x Ethernet Ports
- Control Signals – ON, EVENT, START RECORD, STATUS LED

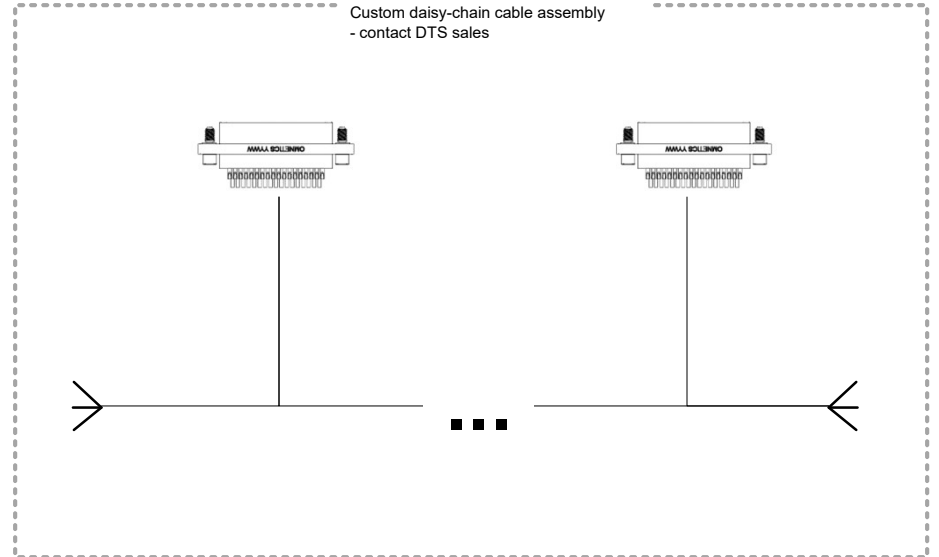
80000-04090-R
21-p System Cable Assy
-18 in length
- pigtail termination



13006-91060
SLICE6 AIR-BR Chain Module



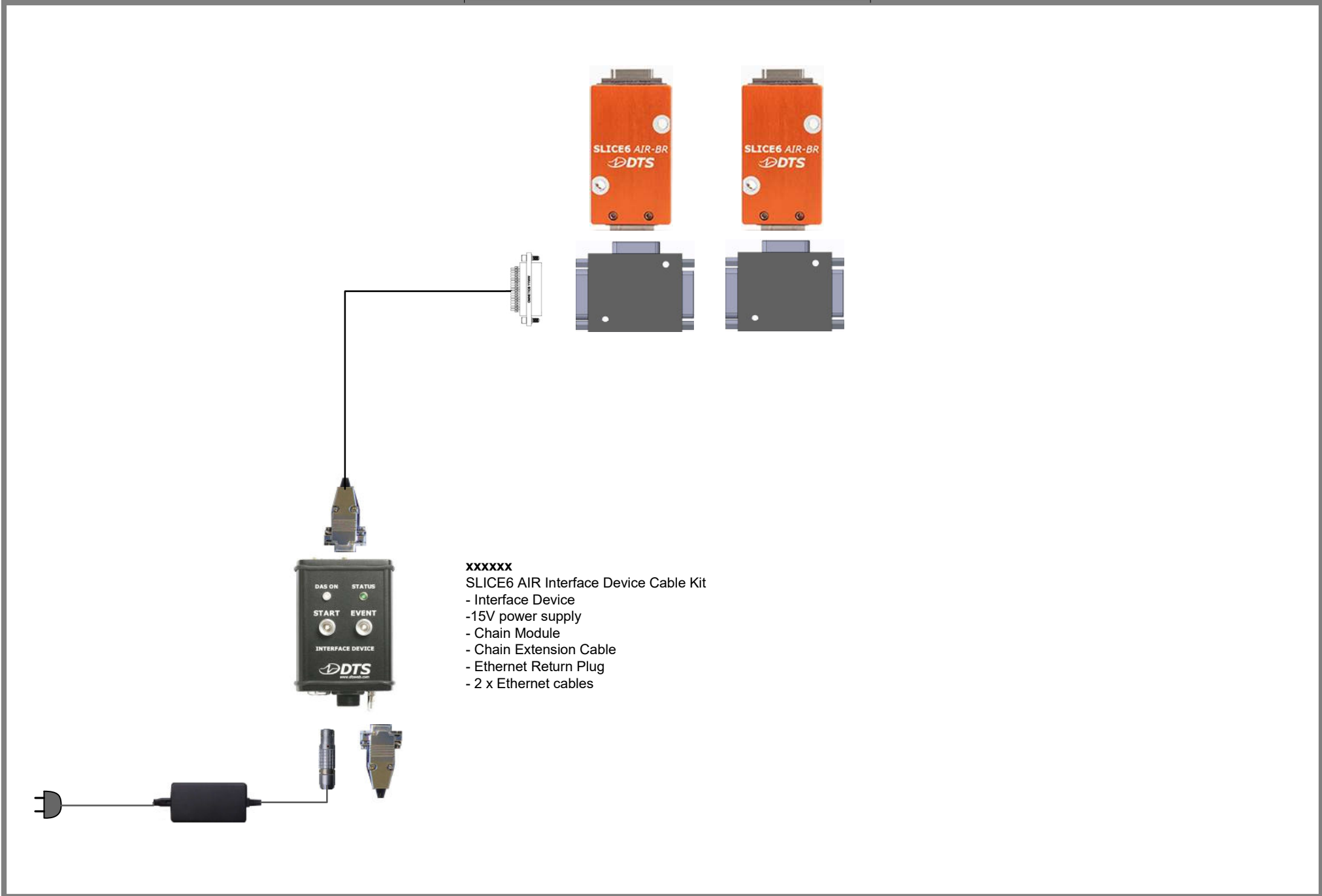
XXXXX-XXXXX
Custom daisy-chain cable assembly
- contact DTS sales





Application Diagram

SLICE6 AIR-BR Benchtop Kit – Interface Device Cable Kit



XXXXXX

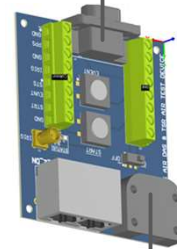
SLICE6 AIR Interface Device Cable Kit

- Interface Device
- 15V power supply
- Chain Module
- Chain Extension Cable
- Ethernet Return Plug
- 2 x Ethernet cables



Application Diagram

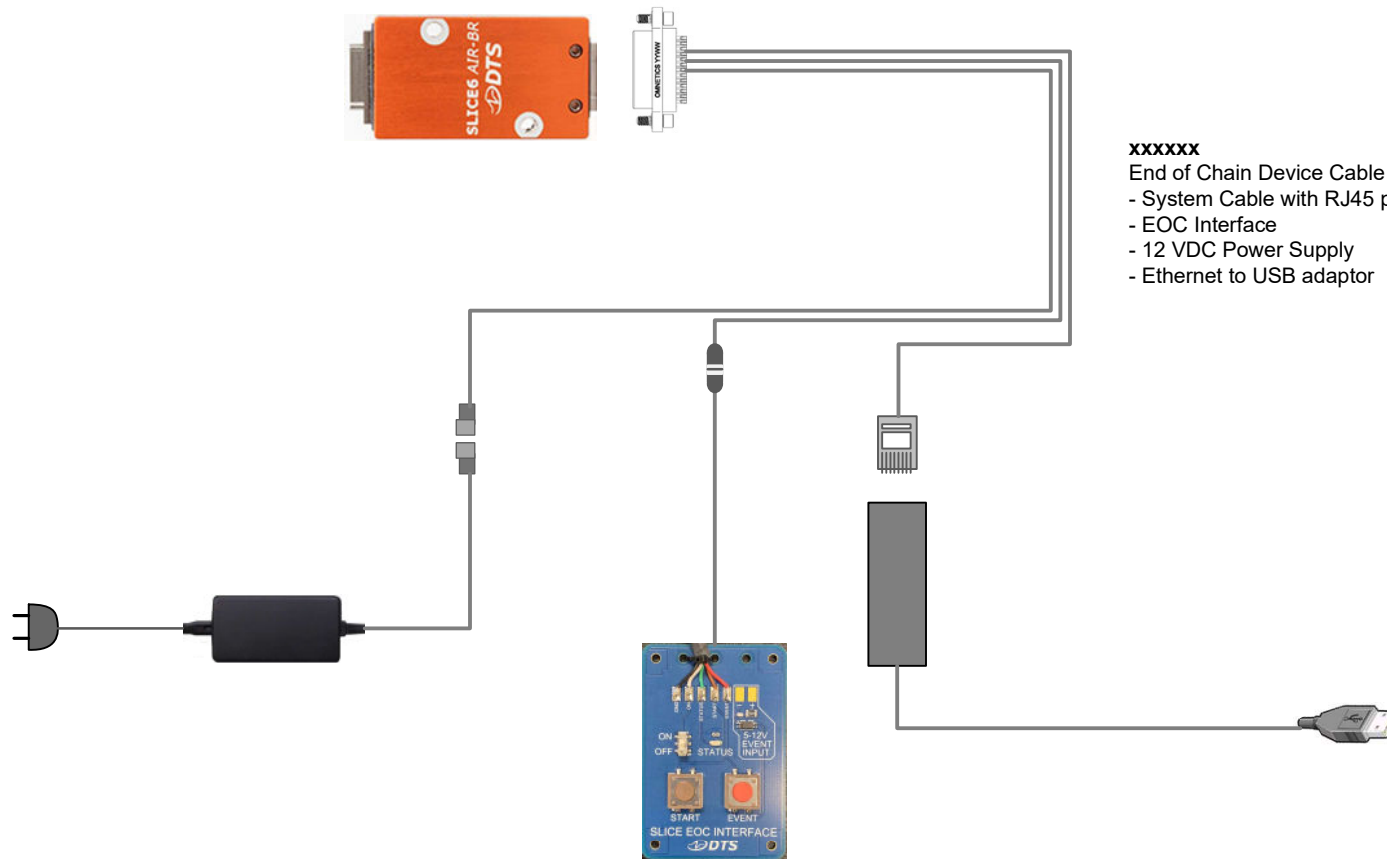
SLICE6 AIR-BR Benchtop Kit – Test Device Cable Kit



- xxxx**
SLICE6-BR AIR Test Device Cable Kit
- 21-p connector
 - 12V power supply
 - Ethernet to USB converter
 - 2 x RJ-45 Ethernet Ports
 - screw terminals for ON, EVENT, START RECORD, STATUS LED



Application Diagram SLICE6 AIR-BR - End of Chain Test Cable



XXXXXX
End of Chain Device Cable Kit
- System Cable with RJ45 plug, and connections for:
- EOC Interface
- 12 VDC Power Supply
- Ethernet to USB adaptor